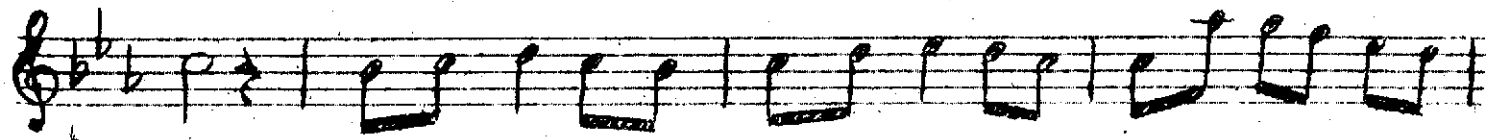
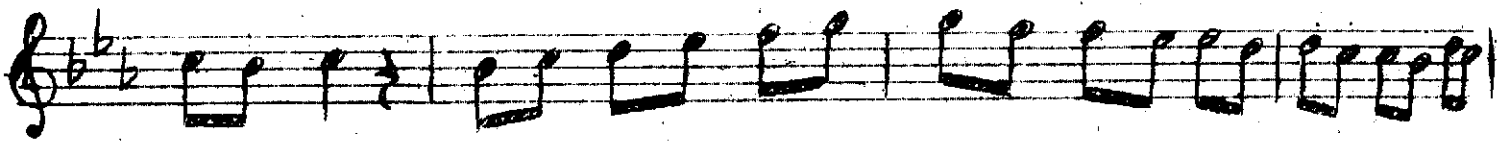
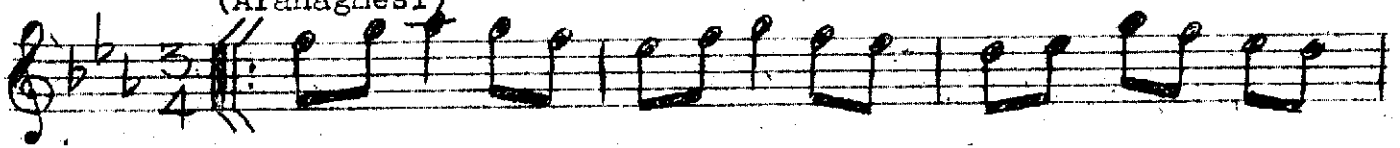


Usulü: Senâî

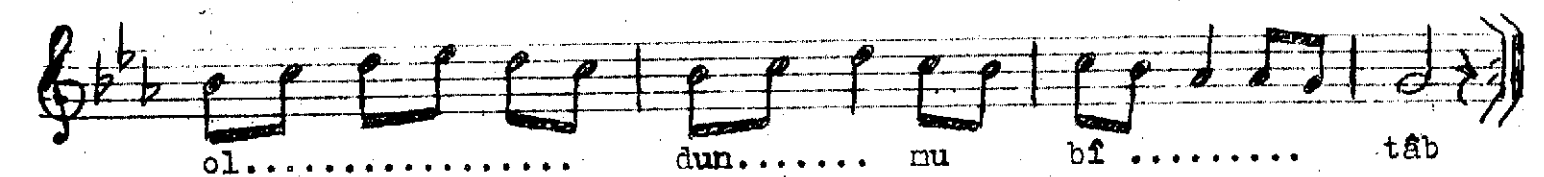
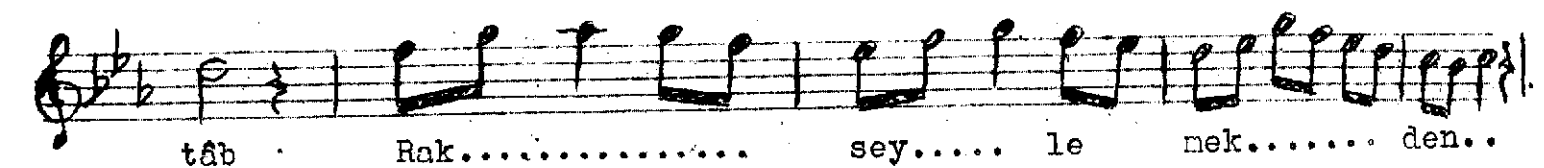
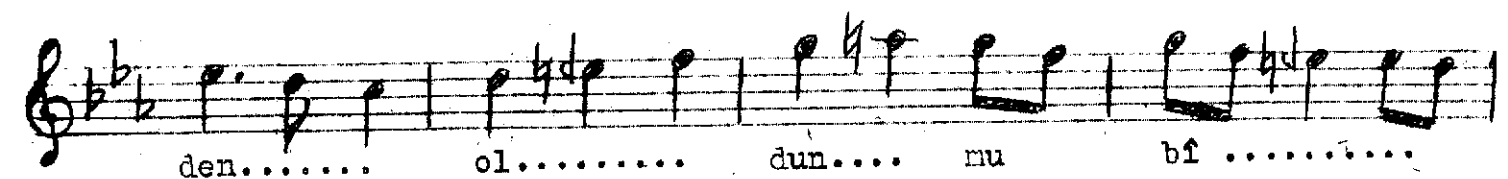
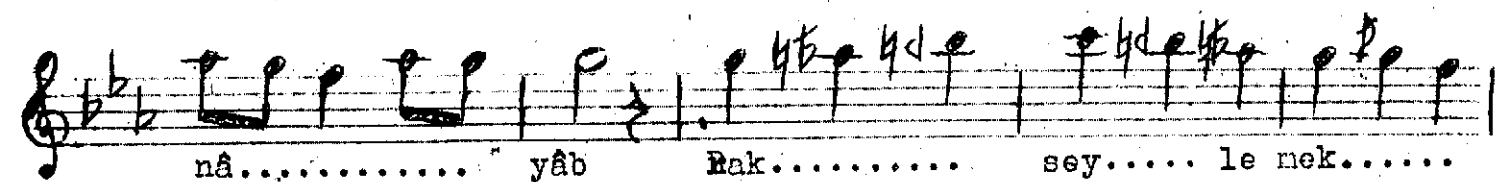
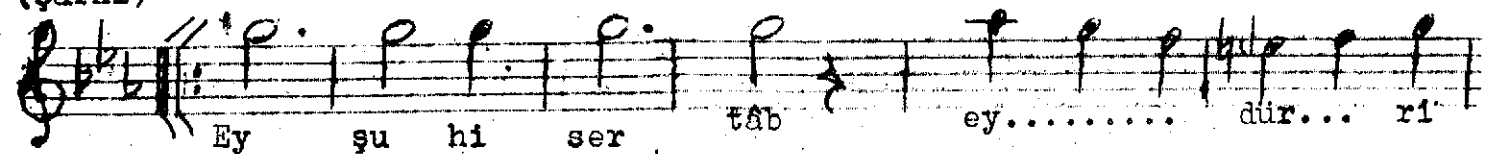
KÜRDİLİHİCAZKÂR ŞARKI

Beste: Len'î Atlı

(Aranâğnesi)



(Şarkı)



(Meyan)

Dev rey li yor..... sun... nâ..... nen... di
 neh..... tâb .. Dev..... sey..... li yor...
 sun nâ..... nen.... di neh..... tâb
 Rak..... sey..... le nek..... den..... ol.....
 dun... nu bî tâb

(Nakarât)

Rak..... sey..... le nek.....
 den.... ol..... dun... nu bî tâb

Ey şûh-i sertâb ey dürr-i nâyâb
 Raks eylemekden oldun mu bî-tâb ?
 Derr eyliyorsun mânend-i mehtâb
 Raks eylemekden oldun mu bî-tâb ?

Şuh - şen
 Sertâb - çok parlak
 Dür - inci
 Nâyâb - bulunmaz
 Bî-tâb - güçsüz, yorgun
 Mânend - benzer
 Mehtâb - ay ışığı